

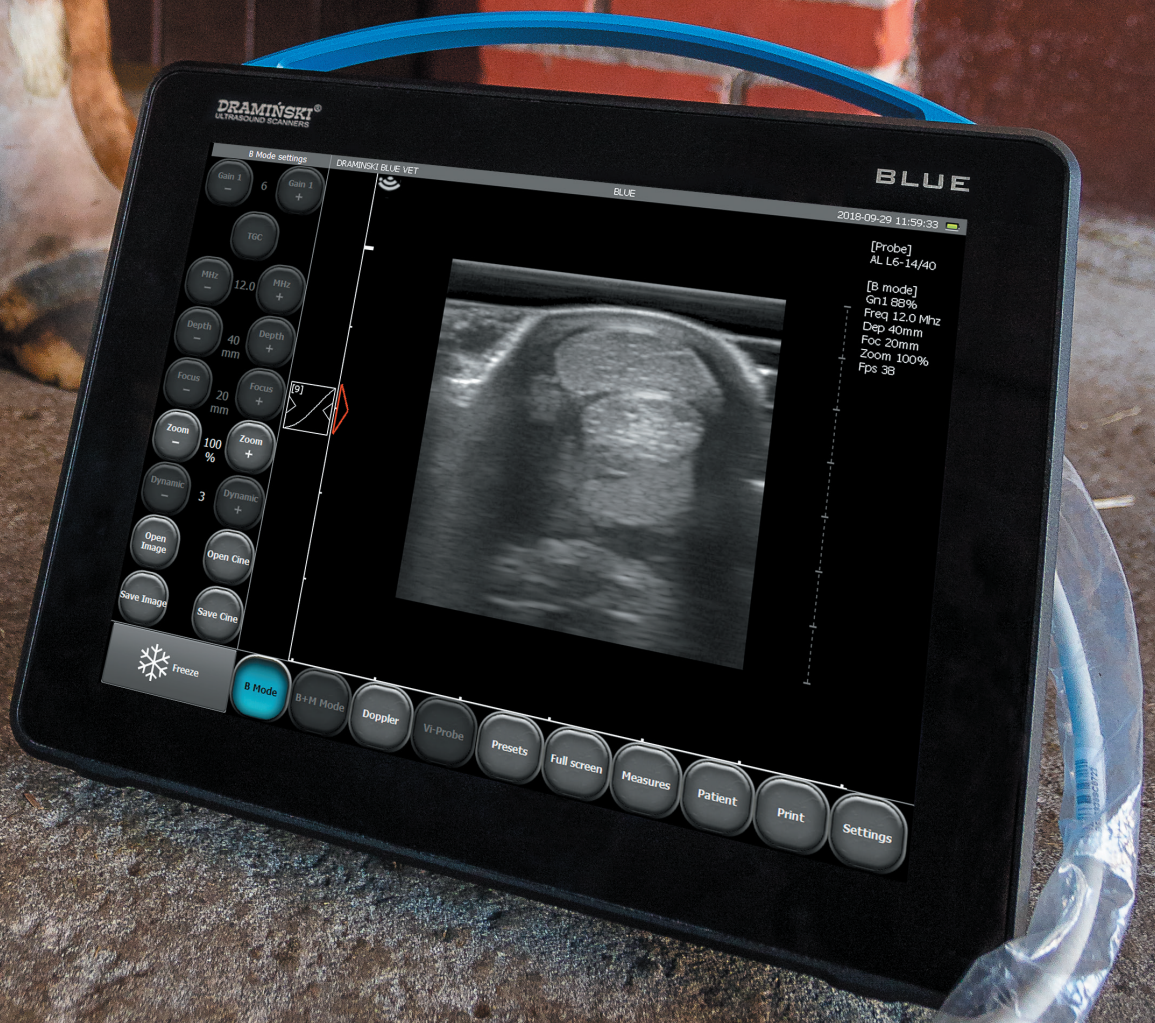
DRAMIŃSKI[®]
ULTRASOUND SCANNERS

www.draminski.com

Dramiński BLUE

See. Touch. Feel the difference.

**MADE IN
POLAND**



Call:
+48 89 527 11 30

Write:
export@draminski.com

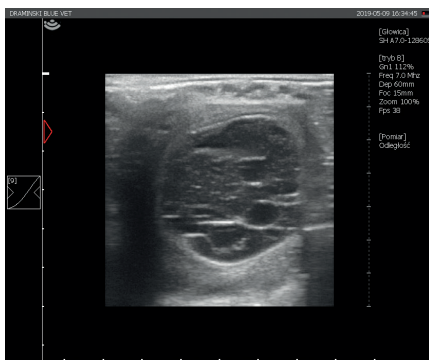
BLUE

- Ready to work in 25 s
- Large touch screen and light design
- Powerful built-in battery
- Doppler: Colour, Power, Pulse Wave

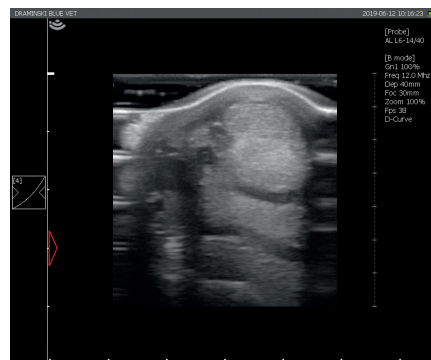


Portable ultrasound scanner for Equine Practitioners.

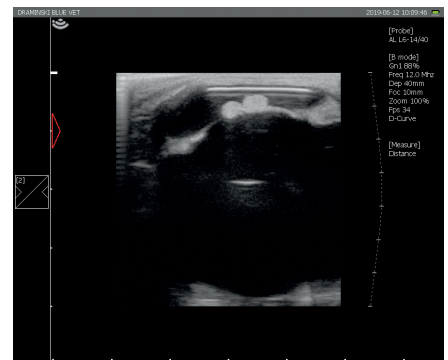
Application: reproduction, locomotor system, lungs, ophthalmology, abdominal cavity.



Mare – ovary



Horse – tendons



Horse – eye

Technologies of the future:



LuciD™ a system that enhances contrast, sharpness and tissue differentiation making images readable and easy to interpret.



D-Curve™ helps distinguishing between slight echogenicity differences – a tone transfer curve ideally suited to the human eye perception.



Vi-Probe™ is a unique technology that provides phased array image type on the convex probe and convex image on the linear probe. BLUE provides enhanced vision, despite a small acoustic window.

Technical data:

Imaging modes	B Mode, B+B Mode, 4B Mode, B+M Mode, Doppler: Colour, Power, Pulse Wave
Operating frequency	1-14 MHz (probe type dependant)
Frame memory and cine loop viewing	60 GB
Data recording	Images and cine loops with description, patient data and date
Data transmission to a data storage device	Via USB interface
Exported file format	PNG for images, AVI, MP4, MOV for cine loop
Number of probe ports	One port, automatic probe recognition
External ports	2 x USB, 2 x LAN, 1 x HDMI
Screen	12" LED LCD display
Feature control	Touch panel
Boot up time	Approx. 25 s
Continuous operation time with battery supply	Approx. 2 hours 30 min.
Battery charging time	Approx. 4 hours.
Accessories	Wheel stand, Caster stand (low), Gel stand-off
Operating temperature	From -15 °C to +45 °C
Recommended storage temperature	From 0 °C to +45 °C