

## Professional sterilization systems



*Newmed*

## **Professional sterilization systems**

**Newmed** was created to satisfy the needs of customers who demand safety, reliability and simplicity all in one sterilization instrument. Thanks to experience, technology and research, we have been able to achieve this objective.

**NEWMED** is a company certified  
**ISO 9001** and **UNI EN ISO 13485**.



*Newmed*

**IT IS JUST A QUESTION OF TIME...**

**MODELS**

**KRONOS B 18 - 23**

**KRONOS B Speedy 6**

**KRONOS S 18 - 23**

**KRONOS N 18 - 23**

**ENERGY 18 - 23**

**NUBYRA 6**





**Kronos B**  
*18-23*



**Kronos B**  
*Speedy 6*



**Kronos S and N**  
*18-23*



**Energy**  
*18-23*

**Kronos Autoclaves**

**fast** sterilization

***Newmed***

# Kronos B

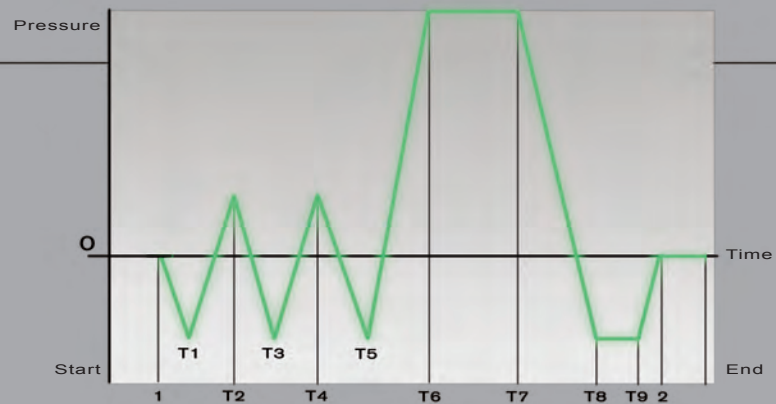
18-23



## Fractionated Vacuum

Using a high-performance Double-stage Vacuum pump

### COMPLETE GRAPHIC CYCLE KRONOS B



**KRONOS B 18-23**  
**STERILIZABLE PRODUCTS**



**SOLID INSTRUMENTS**



**HOLLOW INSTRUMENTS**



**WRAPPED INSTRUMENTS**



**POROUS LOADS**

# Kronos B

18-23



Standards EN-13060





**Motor-operated closure**  
with triple-protection, guarantees a total safety, greater ease of handling and a reliable self-regulation of the hatch.



**Instantaneous Vaporizer**  
outside the chamber allows higher sterilization speeds and reduces water consumption.



**Thermal printer**  
installed on board the machine to allow complete recording of the sterilization cycle. Ensures the user greater cycle control and easy archiving.



**Multi-language graphic display**  
makes it easier for the operator to select the sterilization cycles, continuous control over the cycle phases and gives graphic indication of the errors committed by the operator.



**Connection to STS-Data logger system**  
It is possible to store the data on a PC.



**Stainless steel chamber**  
Made of thick one-piece moulded steel.



**Connection to Demineralization/Osmotic Systems**



## FEATURES

## ADVANTAGES

Motor-operated closure	+	+ ergonomics
Instantaneous vaporizer	+	+ speed - consumption
Standard printer	+	+ control
Loading with self-priming pump	+	+ practical
Graphic display	+	+ easier
Latest Software	+	+ process self-control
Possibility of connection to data logger	+	+ archiving
Provision for connection to demineralizer and direct dirty water drainage	+	+ handy
Electronic drying in vacuum	+	+ safety
Double loading tank and water drainage	+	+ hygiene
Moulded stainless steel one-piece chamber	+	- porous
Memory Test System	+	+ diagnostics
3-cycles Test	+	+ safety
Bowie and Dick Helix Test Vacuum Test		

# Kronos B

*Speedy 6*

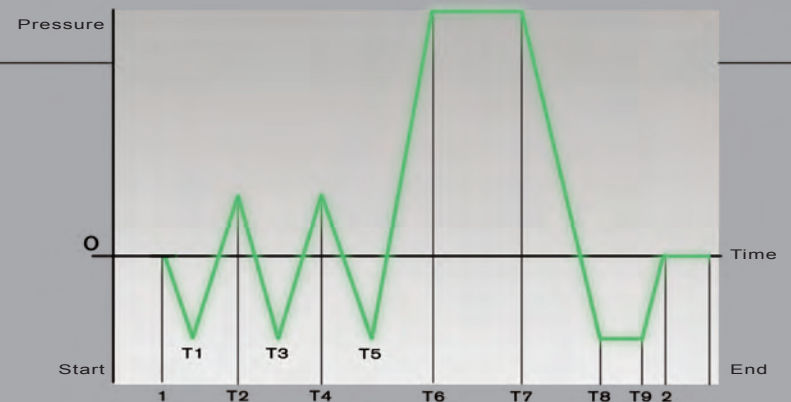
The fastest sterilization process



Fractionated vacuum

With high-performance Double-stage pump

## COMPLETE GRAPHIC CYCLE KRONOS B Speedy



**KRONOS B *Speedy 6***  
**STERILIZABLE PRODUCTS**



**SOLID INSTRUMENTS**



**HOLLOW INSTRUMENTS**



**WRAPPED INSTRUMENTS**



**POROUS LOADS**

# KRONOS B

*Speedy*

---

6



Standards EN-13060



**Motor-operated closure**  
with triple-protection, guarantees a total safety, greater ease of handling and a reliable self-regulation of the hatch.



**Instantaneous Vaporizer**  
outside the chamber allows higher sterilization speeds and reduces water consumption



**Thermal printer**  
installed on board the machine to allow complete recording of the sterilization cycle. Ensures the user greater cycle control and easy archiving.



**Multi-language graphic display**  
makes it easier for the operator to select the sterilization cycles, continuous control over the cycle phases and gives graphic indication of the errors committed by the operator.



**Connection to STS-Data logger system**  
It is possible to store the data on a PC.



**Thick Aluminium chamber**  
for faster sterilization cycle



## FEATURES

## ADVANTAGES

**Motor-operated closure**



+ ergonomics

**Instantaneous vaporizer**



+ speed  
- consumption

**Standard printer**



+ control

**Loading with self-priming pump**



+ practical

**Graphic display**



+ easier

**Latest Software**



+ process  
self-control

**Possibility of connection to data logger**



+ archiving

**Electronic drying in vacuum**



+ safety

**Double loading tank and  
water drainage**



+ hygiene

**Aluminium chamber**



+ rapidity

**Memory Test System**



+ diagnostics

**3-cycles Test**



+ safety

**Bowie and Dick  
Helix Test  
Vacuum Test**

# Kronos S

18-23

# Kronos N

18-23



**S**

**Pre and Post vacuum**

With Double-stage Vacuum Pump

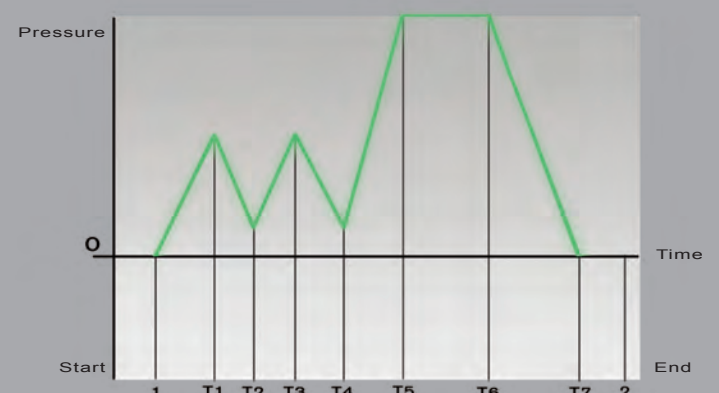
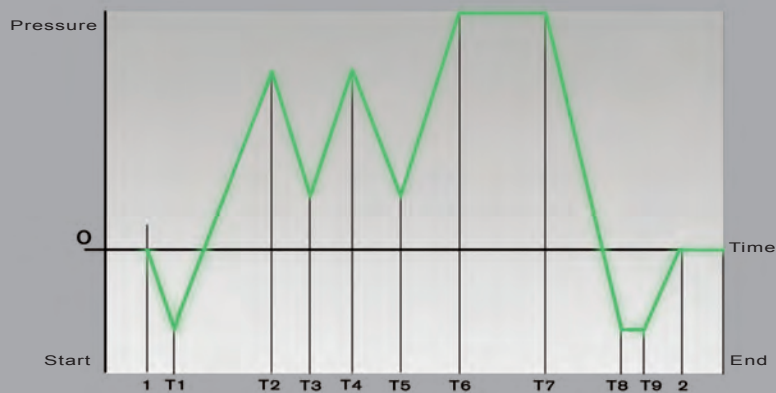
**N**

**Thermodynamic vacuum**

Electronically Controlled

**COMPLETE GRAPHIC CYCLE KRONOS S**

**COMPLETE GRAPHIC CYCLE KRONOS N**



**KRONOS S 18-23**  
**STERILIZABLE PRODUCTS**



**SOLID INSTRUMENTS**



**WRAPPED INSTRUMENTS**



**SMALL POROUS LOADS**

**KRONOS N 18-23**  
**STERILIZABLE PRODUCTS**



**SOLID INSTRUMENTS**

# Kronos S and N

18-23



Standards EN-13060





**Motor-operated closure**  
with triple-protection, guarantees a total safety, greater ease of handling and a reliable self-regulation of the hatch.



**Instantaneous Vaporizer**  
outside the chamber allows higher sterilization speeds and reduces water consumption.



**Thermal printer**  
installed on board the machine to allow complete recording of the sterilization cycle. Ensures the user greater cycle control and easy archiving.



**Multi-language graphic display**  
makes it easier for the operator to select the sterilization cycles, continuous control over the cycle phases and gives graphic indication of the errors committed by the operator.



**Connection to STS-Data logger system**  
It is possible to store the data on a PC.



**Stainless steel chamber**  
Made of thick one-piece moulded steel



**Connection to Demineralization/Osmotic Systems**



## FEATURES

## ADVANTAGES

**Motor-operated closure**



+ ergonomics

**Instantaneous vaporizer**



+ speed  
- consumption

**Standard printer**



+ control

**Loading with self-priming pump**



+ practical

**Graphic display**



+ easier

**Latest Software**



+ process  
self-control

**Possibility of connection to data logger**



+ archiving

**Provision for connection to demineralizer and direct dirty water drainage**



+ handy

**Electronic drying in vacuum  
(kronos S only)**



+ safety

**Double loading tank and  
water drainage**



+ hygiene

**Moulded one piece stainless  
steel chamber**



- porous

**Memory Test System**



+ diagnostics



+ safety

**Bowie and Dick  
Vacuum Test**

# Energy

18-23

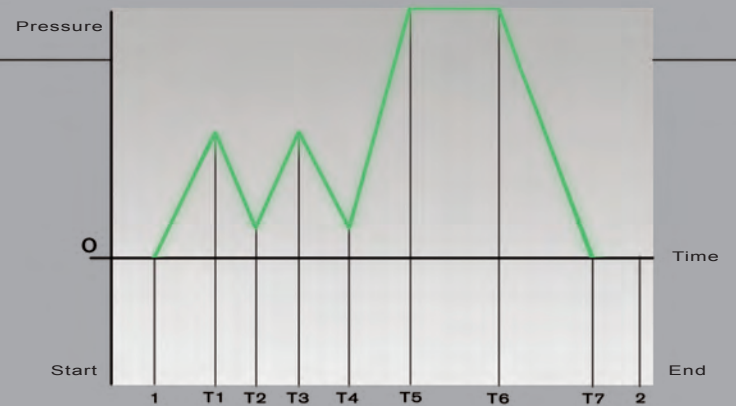
Completely Automatic  
controlled by microprocessor



**Thermodynamic vacuum**

Electronically Controlled

## COMPLETE GRAPHIC CYCLE ENERGY



**ENERGY 18-23**  
**STERILIZABLE PRODUCTS**



**SOLID INSTRUMENTS**



# Energy

18-23



## FEATURES



**The closure system**  
Easy and practical with double safety



**INOX chamber**  
Thick one-piece moulded steel



**LCD Display**  
Makes it easier for the operator to select the sterilization cycles, allows a continuous control over the cycle phases and gives an information of the errors committed by the operator.



**Closure system**  
Easy and practical



**Stainless steel chamber**  
Single piece moulded steel



**LCD display** with continuous temperature and pressure display



**Double sensor**



**Double control**  
of sterilization process



**Electronic Transducer**  
Allowing a precise check of pressure



**Two electronic temperature probes**  
for measuring the temperature inside and outside the sterilization chamber



**Internal tank with probe**  
which shows the minimum and maximum level on the display



**Loading of water** through a self-priming pump



**Sterilization cycles**  
Completely automatic:  
2 sterilization cycles at 121°  
2 sterilization cycles at 134°

# THE PROGRAMS MENU

Designed for perfect sterilization of various materials, thanks to the combination of vacuum, temperature and drying.

## Cycles Tables

### Kronos B 18-23

Materials and instruments	Program	Vacuum phases	Total time*
Delicate hollow** and rustproof hollow (wrapped)	121° Hollow wrapped	4	28 minutes
Rustproof hollow (wrapped)	134° Hollow wrapped	4	15 minutes
Solid made of rubber and delicate solids (wrapped)	121° Solid wrapped	2	28 minutes
Rustproof solid (wrapped)	134° Solid wrapped	2	15 minutes
Rustproof solid and hollow (wrapped)	134° Prion	4	30 minutes
Delicate, hollow and porous (wrapped)	121° Porous	4	33 minutes
Solid rustproof, hollow, and porous (wrapped)	134° Porous	4	20 minutes
Solid made of rubber and delicate (unwrapped)	121° Rapid	2	22 minutes
Solid rubber (unwrapped)	134° Rapid	2	9 minutes
Hollow made of rubber and stainless steel (unwrapped)	134° Open hollow	4	9 minutes
Test Cycle for Helix and Bowie & Dick	134° Helix/B&D Test	4	7.5 minutes
Test Cycle for vacuum	<40° Vacuum Test	1	15 minutes

\* Including drying phase, excluding preheating. The preheating may vary from 20 to 25 minutes depending on the load

\*\* Type A and B hollow instruments, in accordance with EN 13060

\*\*\* For Kronos B23 the total time must be increased by 15 minutes

### Kronos B Speedy

Materials and instruments	Program	Vacuum phases	Total time*
Delicate hollow** and rustproof hollow (wrapped)	121° Hollow wrapped	4	28 minutes
Rustproof hollow (wrapped)	134° Hollow wrapped	4	15 minutes
Delicate hollow and rustproof hollow (unwrapped)	121° Open hollow	4	20 minutes
Hollow rubber and rustproof hollow (unwrapped)	134° Open hollow	4	7 minutes
Rustproof solid and hollow (wrapped)	134° Prion	4	30 minutes
Delicate, hollow and porous (wrapped)	121° Porous	4	33 minutes
Solid rustproof, hollow, and porous (wrapped)	134° Porous	4	20 minutes
Solid made of rubber and delicate (unwrapped)	121° Solid open	2	20 minutes
Solid rustproof (unwrapped)	134° Solid open	2	7 minutes
Solid rustproof (wrapped)	134° Solid wrapped	2	15 minutes
Test Cycle for Helix and Bowie & Dick	134° Helix/B&D Test	4	6 minutes
Test Cycle for vacuum	<40° Vacuum Test	1	15 minutes

\* Including drying phase, excluding preheating. The preheating may vary from 7 to 10 minutes depending on the load

\*\* Type A and B hollow instruments, in accordance with EN 13060

## Kronos S

18-23

Materials and instruments	Program	Vacuum phases	Total time*
Delicate hollow** and rustproof hollow (wrapped)	121° Hollow wrapped	2	30 minutes
Rustproof hollow (wrapped)	134° Hollow wrapped	2	22 minutes
Solid made of rubber and delicate solids (wrapped)	121° Solid wrapped	2	28 minutes
Rustproof solid (wrapped)	134° Solid wrapped	2	15 minutes
Rustproof solid and hollow (wrapped)	134° Prion	2	35 minutes
Delicate, hollow and porous (wrapped)	121° Porous	2	33 minutes
Solid rustproof, hollow, and porous loaded small(wrapped)	134° Porous	2	20 minutes
Solid made of rubber and delicate (unwrapped)	121° Rapid	2	33 minutes
Solid rustproof (not wrapped)	134° Rapid	2	10 minutes
Hollow made of rubber and rustproof (unwrapped)	134° Open hollow	2	11 minutes
Test Cycle for Bowie & Dick	134° B&D Test	2	7.5 minutes
Test Cycle for vacuum	<40° Vacuum Test	1	15 minutes

\* Including drying phase, excluding preheating. The preheating may vary from 20 to 25 minutes depending on the load

\*\* Type A and B hollow instruments, in accordance with EN 13060

\*\*\* For Kronos S23 the total time must be increased by 15 minutes

## Kronos N

18-23

Materials and instruments	Program	Total time*
Solid made of rubber and delicate solid (with prolonged drying)	121° Solid open	33 minutes
Solid made of rubber and solid metal (with prolonged drying)	134° Solid open	21 minutes
Solid stainless steel and metal instruments	134° Prion	35 minutes
Solid made of rubber and delicate solid (with brief drying)	121° Rapid	23 minutes
Solid made of rubber and solid metal (with brief drying)	134° Rapid	11 minutes

\* Including drying phase, excluding preheating. The preheating may vary from 20 to 25 minutes depending on the load

\*\*\* For Kronos N23 the total time must be increased by 15 minutes

## Energy

18-23

Materials and instruments	Program	Total time*
Solid made of rubber and delicate solid	121° Long Dry	33 minutes
Solid made of rubber and solid metal	121° Short Dry	27 minutes
Solid stainless steel and metal instruments	134° Long Dry	26 minutes
Solid made of rubber and delicate solid	134° Short Dry	21 minutes

\* Including drying phase, excluding preheating. The preheating may vary from 20 to 25 minutes depending on the load

\*\*\* For Energy 23 the total time must be increased by 15 minutes

# Technical features

	Kronos B 18-23		Kronos B Speedy	Kronos S 18-23		Kronos N 18-23		Energy 18-23	
<b>Motor-operated</b> closure								Mechanical	
Door lock <b>safety</b>	Electric		Electric	Electric		Electric		Mechanical	
Type of <b>Vacuum</b>	Fractionated		Fractionated	Pre and Post vacuum		Thermodynamic		Thermodynamic	
Instantaneous <b>Vaporizer</b>									
<b>Test</b> Programs	Bowie & Dick/ Helix/Vacuum		Bowie & Dick/ Helix/Vacuum	Bowie & Dick/ Vacuum					
Onboard <b>Printer</b>									
<b>Display</b>	Graphic		Graphic	Graphic		Graphic		Digital	
<b>M.T.S.</b> Memory System Test									
<b>Connection</b> to Data Logger									
<b>Connection</b> to demineralizer									
<b>Night</b> Cycle									
Internal <b>water tanks</b> (loading and unloading)	2		2	2		2		1	
<b>Chamber</b> volume in litres	<b>18</b>	<b>23</b>	<b>6</b>	<b>18</b>	<b>23</b>	<b>18</b>	<b>23</b>	<b>18</b>	<b>23</b>
<b>No. of Cycles</b> with water loading (indicative)	8	6	18	10	8	10	8	16	12
Wrapped <b>sterilizable weight</b> in kg	3	4,5	1	3	4,5				
Unwrapped <b>sterilizable weight</b> in kg	4	6	1,8	4	6	4	6	4	6
<b>Porous</b> material in kg	1	1,5	0,5	0,5	1				
<b>Empty machine</b> weight in kg	56	60	40	45	50	43	48	40	45
<b>Outer measurement:</b>									
Depth mm	610	695	580	610	695	610	695	610	695
Width mm	505	505	445	445	445	445	445	445	445
Height mm	400	400	345	400	400	400	400	400	400
Supply voltage	220-240 V								
Mains frequency	50-60 Hz								
Rated power	2400 W		2500 W	2400 W		2400 W		1800 W	

standard not present

Newmed reserves the right to make modifications without prior warning

## Standard Trays

	Quantity	Dimensions in mm
<b>6 liters</b> autoclaves	3	1 tray 150 x 240 x 19
		2 trays 115 x 240 x 19
<b>18 liters</b> autoclaves	4	185 x 285 x 17
<b>23 liters</b> autoclaves	4	185 x 440 x 17



# NUBYRA 6

Completely automatic cycle

Thermodynamic vacuum

Chamber in aluminium

LCD Display



## Features

**Closure system:** easy and practical

**LCD display:** with continuous control of temperature and pressure

**Double sensor:** for safety on door closure

**Double control:** of sterilization process

**Electronic transducer:** allowing a precise check of pressure

**Two electronic temperature probes,**  
one inside and one outside the sterilization chamber

**Sterilization cycles:** completely automatic

**2 sterilization cycles** at 121°

**2 sterilization cycles** at 134°

**Vacuum type:** thermodynamic

**Water filling:** manual

**Night cycle:** yes

**Chamber capacity:** 6 liters

**Sterilizable weight:** 1 Kg

**Autoclave weight:** 30 Kg

**Dimensions:** 480 mm depth  
445 mm width  
350 mm height

**Voltage:** 230 V 50/60 Hz

**Rated power:** 1350 W

**Trays:** 3  
1x(150x240x19)  
2x(115x240x19)



## ACCESSORIES and **Optionals**



### **Perfect Water**

Electrical water distiller.



### **“Pulcino” Incubator**

Incubator for biological spores.  
It is used for periodic testing  
of the autoclave.



### **Osmo2**

Osmotic system with high  
purification capacity.



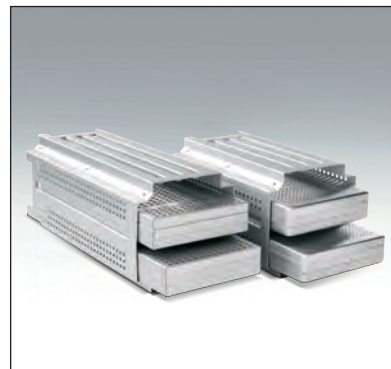
### **STS-Datalogger USB**

Device for data collection with  
direct recording on USB key,  
complete with software for data  
evaluation (developed for s.o.  
Windows).



### **Tests for Autoclaves**

Wide range of tests:  
HELIX TEST to check sterilization  
inside hollow instruments  
BOWIE & DICK TEST: to check  
sterilization in porous materials  
CHEMICAL INDICATORS: to  
check each sterilization cycle  
SPORES: for the biological control  
of sterilization.



### **Reversible Trayholders**

To make autoclave load optimum  
It can be used both for standard  
trays and cassettes for implants.  
Available for 18 and 23 Lt.  
autoclaves.



### **Ultrasonic Tanks**

Wide range of ultrasonic tanks  
from 2.5 to 9 litres.  
All the models are of electronic  
type with automatic control  
of frequency.  
Equipped with stainless steel  
tanks.  
Many accessories are available.



### **Sealing machine Termoseal:**

Ergonomic design and fast  
sealing times.  
Concealed roll-holder  
Stretched 12mm seal  
Dimensions:  
480x198x385 mm (LXHXD)  
Voltage: 230V - 50/60 Hz  
Power adsorbed 100 W  
Weight: 9 kg

**IT IS JUST A QUESTION OF TIME...**

Your time...

**Directives applicable**  
Reference **Standards of autoclaves**

**Directive:** Medical Devices **93/42/EEC**

**Directive:** Pressure Vessels **97/23/EEC**

**Directive:** Small steam sterilizers **EN13060** (excluding Energy and Nubyra)

**Directive:** Electromagnetic compatibility **CEI EN 61326-1**

**Directive:** Safety instructions for laboratory apparatus **CEI EN 61010-1**

**Directive:** Particular requirements for sterilizers and washer-disinfectors used to treat medical materials **CEI EN 61010-2-40**



*Newmed*



*Newmed* A Midmark Company

Via Lenin, 79/A - 42020 Quattro Castella - Reggio Emilia - ITALY  
Tel. +39 0522 875166 Fax. +39 0522 243096  
[info@newmedsrl.it](mailto:info@newmedsrl.it)  
[www.newmedsrl.it](http://www.newmedsrl.it)