



## VACUETTE® Safety Blood Collection Sets



- Safety mechanism isolates the needle into a closed system
- An audible click confirms safety shield is locked
- Enables safe blood collection from difficult veins, high risk areas and blood cultures
- Memory-free tubing prevents springback

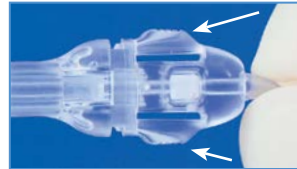
# VACUETTE®

## Safety Blood Collection Sets

### Especially for difficult venous access

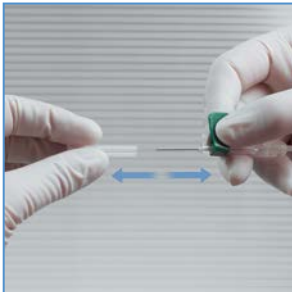
The **VACUETTE®** Safety Blood Collection Set has been especially developed for patients with difficult venous access. As the protection mechanism is activated whilst still in the vein, a high level of safety is ensured. Correct activation is indicated via an audible click. With the transparent view window, visual control of blood flow is possible, thus increasing venepuncture safety.

The **VACUETTE®** Safety Blood Collection Set is available in three versions; Preassembled with Luer Adapter and Holder, with Luer Adapter only and without Luer Adapter or Holder (Infusion Sets)



The safety protection mechanism is activated by pressing in both buttons of the safety hub and sliding backwards

### Instructions for Use (ensure all components are securely fixed together)



**1** Remove the protective cap



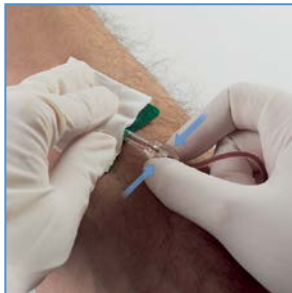
**2** Perform Venepuncture



**3** Insert the first tube



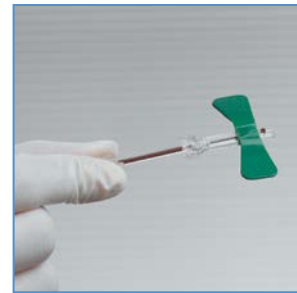
**4** Remove the last tube



**5** After securing the butterfly wings, press in both buttons of safety hub



**6** Slide safety hub backwards until an audible click is heard



**7** The needle will be fully enclosed in the protective shield



**8** Dispose of in an approved sharps container

### Ordering Details

Item No.	Description	Case Qty	Inner Pack
<b>Safety Blood Collection Sets pre-assembled with Luer Adapter and Holder</b>			
450087	21G 10cm tubing	24	1
450085	21G 19cm tubing	24	1
450086	23G 19cm tubing	24	1
450080	25G 30cm tubing	24	1



Item No.	Description	Case Qty	Inner Pack
<b>Safety Blood Collection Sets pre-assembled with Luer Adapter</b>			
450083	21G 10cm tubing	50	1
450081	21G 19cm tubing	50	1
450095	21G 30cm tubing	50	1
450084	23G 10cm tubing	50	1
450082	23G 19cm tubing	50	1
450096	23G 30cm tubing	50	1
450099	25G 30cm tubing	50	1



### Safety Blood Collection / Infusion Sets

450091	21G 19cm tubing	50	1
450092	23G 19cm tubing	50	1
450090	25G 19cm tubing	50	1

